

## Customer Information Notice: CIN159

### trophon<sup>®</sup>2 Version 1.6 Software Release

Nanosonics has a new software release for the trophon2 device, Version 1.6.

The enhancements of this software release include:

- **Simplified disinfection workflow**
- **Customizable AcuTrace<sup>®</sup> settings**
- **USB Wi-Fi adapter connectivity**

Other software updates relate to further improvements to software security and device reliability.

The trophon2 User Manual has been updated to reflect the software changes. The latest version of trophon2 User Manual can be accessed online via Nanosonics Academy or your regional Nanosonics Customer Centre.

If your trophon2 device is being upgraded from software versions prior to Version 1.5 you should also refer to the relevant Customer Information Notices (CIN) of previous software releases to ensure that you are familiar with all the changes to your trophon device. The CINs are available in the 'Product & Clinical Information' section of your regional Nanosonics Customer Centre.

## Simplified workflow

The user experience has been significantly enhanced by reducing the number of user interactions required to initiate and complete a trophon disinfection cycle, while still satisfying all traceability requirements.

The new, self-intuitive workflow combines steps and utilises AcuTrace technology to provide a seamless user experience.

The following screens have been combined, when AcuTrace is fully enabled:

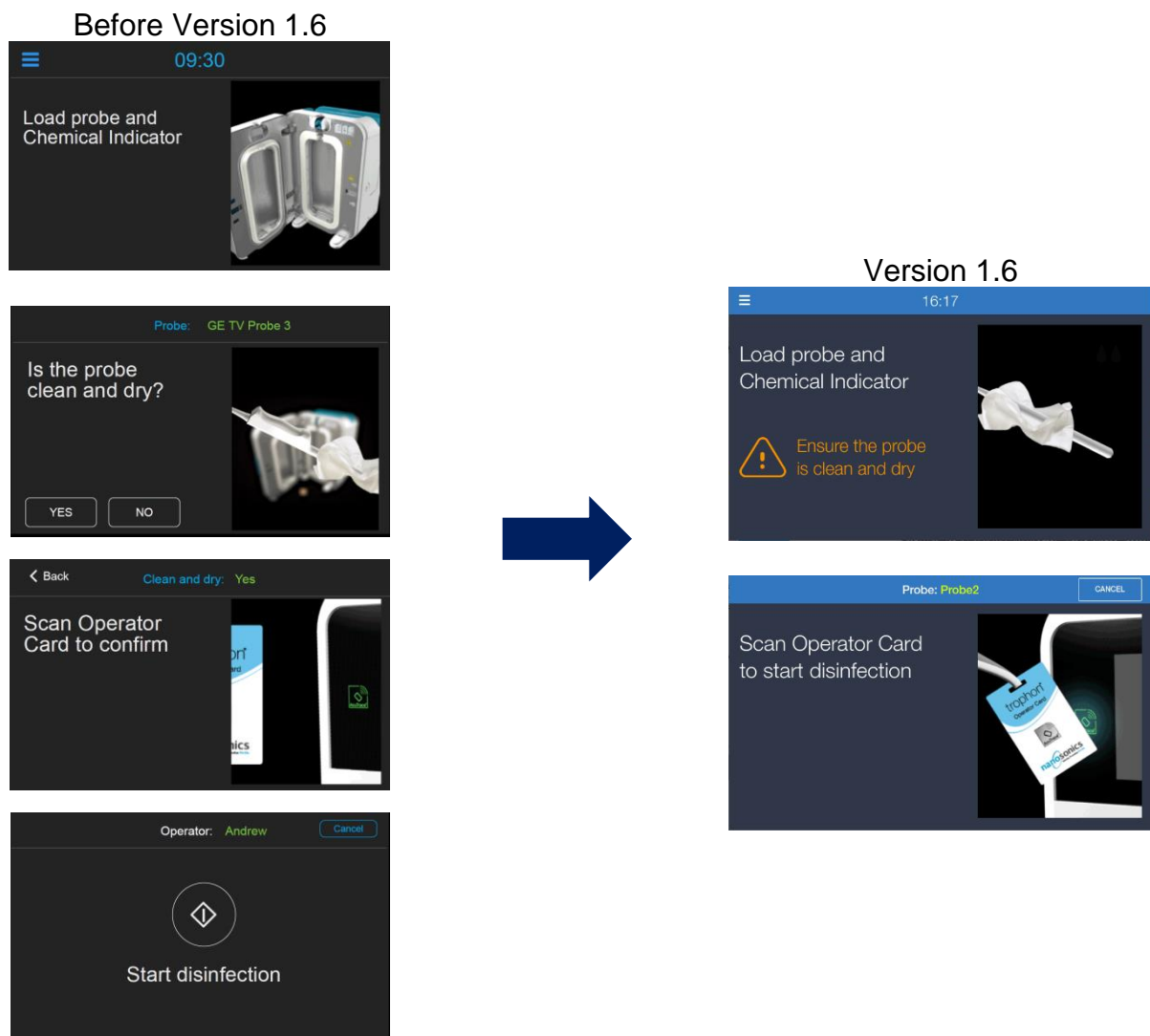
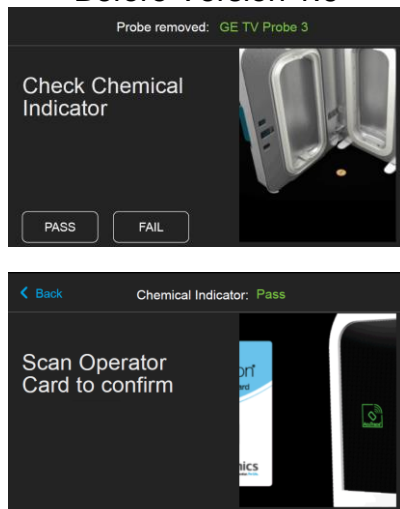


Figure 1: Changes to the trophon2 screens – Initiating HLD cycle

### Before Version 1.6



### Version 1.6

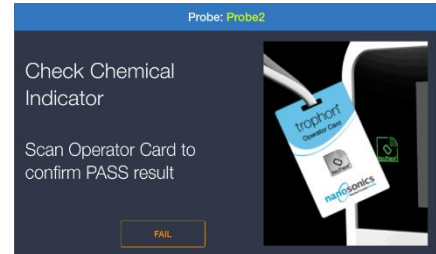


Figure 2: Changes to the trophon2 screens – Confirming Chemical Indicator Result

The Disinfection Pass screen, has been updated to remove the OK button and replaced with a 3 second timer after which the device will transition to the Preparing for Disinfection Screen.

### Before Version 1.6



### Version 1.6

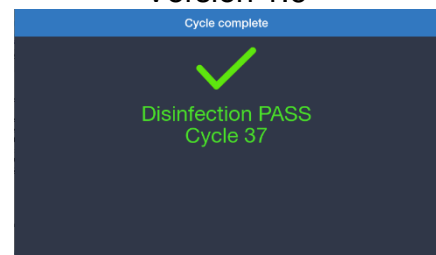


Figure 3: Changes to the trophon2 screens – Disinfection Cycle PASS

Note: When AcuTrace or Operator Card is disabled the cycle will be initiated with a start button on the screen as per the image below.

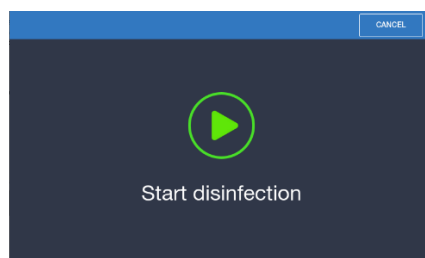


Figure 4: Changes to the trophon2 screens – Initiating HLD cycle with AcuTrace/ Operator Card disabled

## Scanning AcuTrace Consumables & Accessories

When programming Medical Instrument Tags and/or Operator Cards, there is no longer an OK button to press, confirming that the accessories have been programmed successfully. Instead, the button has been replaced with a 1 second timer.

The AcuTrace reader light will change from being permanently ON to a breathing pattern, from faded to bright to indicate a scanning action is required.

## **Customisable AcuTrace settings**

Additional flexibility has been introduced in AcuTrace settings to allow the users to select the desired level of traceability. Specifically, operator and chemical indicator logging can be enabled or disabled individually (in addition to the prior option of turning AcuTrace ON/OFF).

The graphical user interface (GUI) has been updated to use the term 'AcuTrace Settings' instead of 'Workflow'.

Refer to the (**≡**) **Main Menu → AcuTrace → AcuTrace Settings**

## trophon Printer Labels & Cycle Records

Disabling the logging of Chemical Indicators and/or Operator Cards will deactivate the trophon2 device from recording this data on both the trophon Printer Labels and device cycle records.



Figure 5: trophon2 Printer Label –  
AcuTrace ON, Logging Chemical Indicators and Operator Cards OFF

By turning OFF logging Chemical Indicators and/or Operator Cards, the printout format for AcuTrace ON will not need to be updated. Instead, when Logging Chemical Indicators and/or Operator Cards is OFF the relevant printout records and device records (including those sent to Nanosonics AuditPro\*) will be empty.

**IMPORTANT:** Nanosonics recommends setting AcuTrace to ON for the best automated workflow experience and traceability compliance.

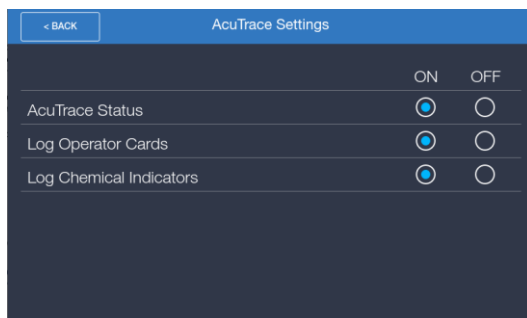


Figure 6: AcuTrace Settings Menu

If any AcuTrace workflow step is disabled, user will need to acknowledge a warning message.

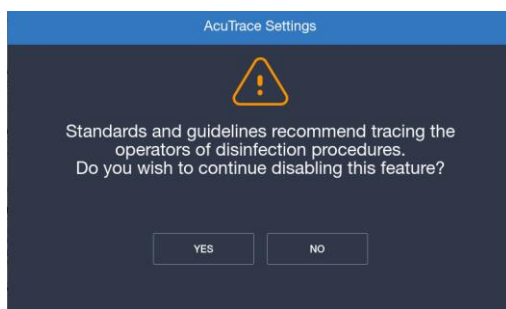


Figure 7: Disabling operator tracing

## USB Wi-Fi adapter connectivity

There is new functionality to allow for connection to a Wi-Fi network via a peripheral USB dongle. This feature allows for trophon device to be connected to the facilities network wirelessly, in areas where physical, ethernet connection may not be possible or desired. Network connectivity is required for AuditPro\* integration and Network Time Protocol (NTP) functionality.

The following USB Wi-Fi adapters are recommended with the trophon2 device:

1. TP-Link TL-WN725N (WPA2)
2. TP-Link TL-WN722N (WPA2)
3. Edimax EW-7811Un V2 (WPA3)

Other compatible WIFI USB adapters may be used if they meet the following specifications:

1. USB Type: USB 2.0
2. Linux Compatibility: Kernel 2.6 or later
3. Certifications: RoHS, WEEE
4. Chipset: Realtek RTL8188EUS

Refer to trophon User Manual for instructions on USB Wi-Fi adapter installation.

---

\* Nanosonics AuditPro is only available for sale in selected regions. Consult a Nanosonics representative for further information.

The trophon® family includes trophon® EPR and trophon®2 devices which share the same core technology of 'sonically activated' hydrogen peroxide.

*Nanosonics, trophon, AcuTrace, NanoNebulant and Sonex-HL are trade marks of Nanosonics Ltd.*